



GAT MONTHLY MEMBERSHIP PROGRESS REPORT

Results as of: 5/31/2022

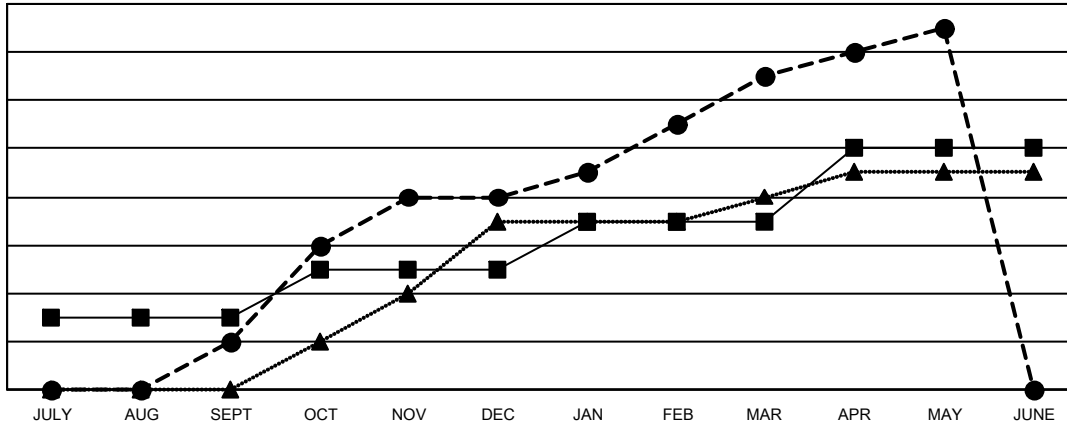
Multiple District 412

LOCATION: ZIMBABWE

Clubs			
RESULTS FOR 2021-2022			
QUARTER	NEW CLUB GOAL	NEW CLUBS	DROPPED CLUBS
JULY/AUG/SEPT	3	2	0
OCT/NOV/DEC	2	6	1
JAN/FEB/MAR	2	5	1
APR/MAY/JUNE	3	2	0

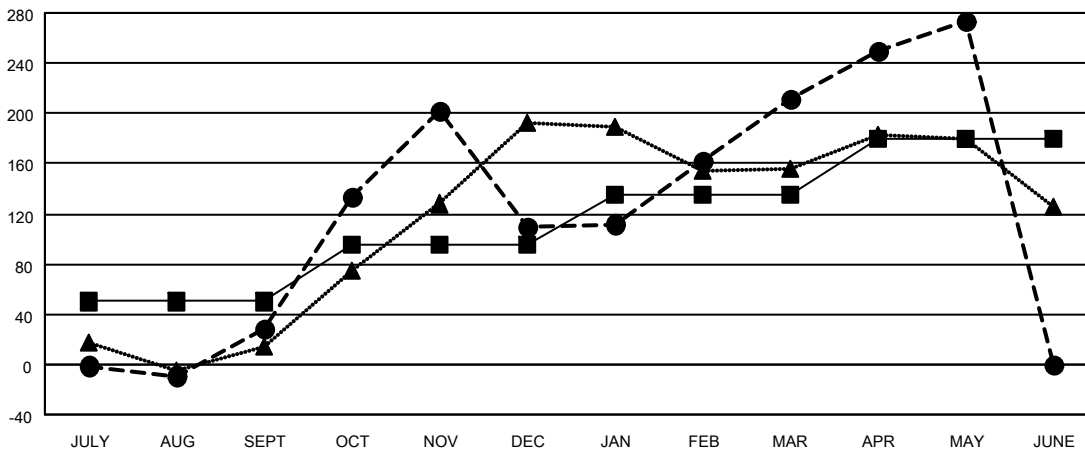
Members			
RESULTS FOR 2021-2022			
QUARTER	MEMBER GROWTH NET GOAL	MEMBER GROWTH ACTUAL	DROPPED MEMBERS ACTUAL (including transfers)
JULY/AUG/SEPT	50	92	60
OCT/NOV/DEC	45	208	125
JAN/FEB/MAR	40	187	73
APR/MAY/JUNE	45	104	43

GOALS AND ACTUAL NEW CLUBS CUMULATIVE



- - CURRENT YEAR GOALS FOR NEW CLUBS
- - CURRENT YEAR ACTUAL NEW CLUBS
- ▲ - LAST YEAR ACTUAL NEW CLUBS

GOALS AND ACTUAL MEMBERS CUMULATIVE



- - MEMBER GROWTH NET GOAL
- - MEMBER GROWTH ACTUAL
- ▲ - LAST YEAR MEMBERSHIP ACTUAL

DROPPED CLUBS: 2	58 CLUBS OF 84 ADDED 1 OR MORE NEW MEMBERS	GENDER DISTRIBUTION	
DROPPED MEMBERS		MALE	979 (55.50%)
DECEASED	4	FEMALE	785 (44.50%)
CLUB CANCELLED	39	NON BINARY	0 (0.00%)
OTHER	259	PREFER NOT TO ANSWER	0 (0.00%)
TOTAL	302	TOTAL FAMILY UNIT MEMBERS 423	
CLICK HERE FOR CUMULATIVE MEMBERSHIP DATA		FAMILY MEMBERS PAYING HALF DUES 236	